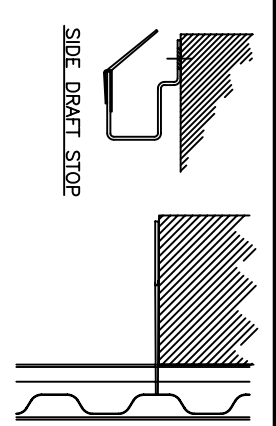
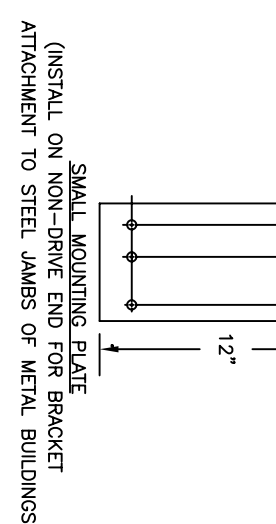
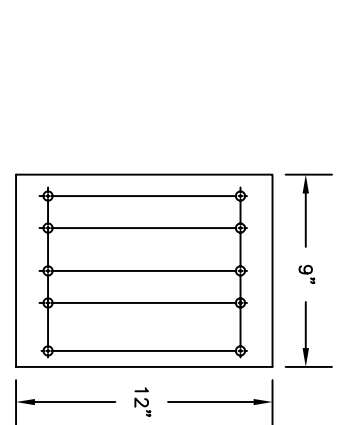
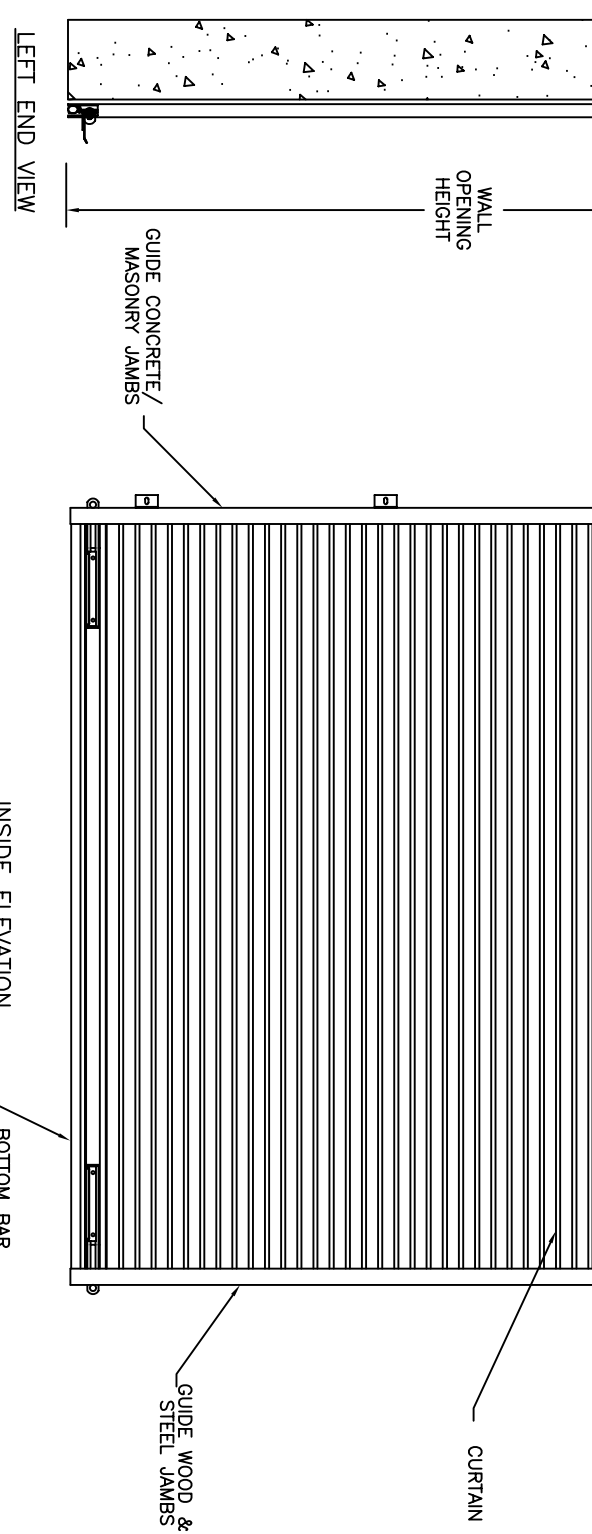
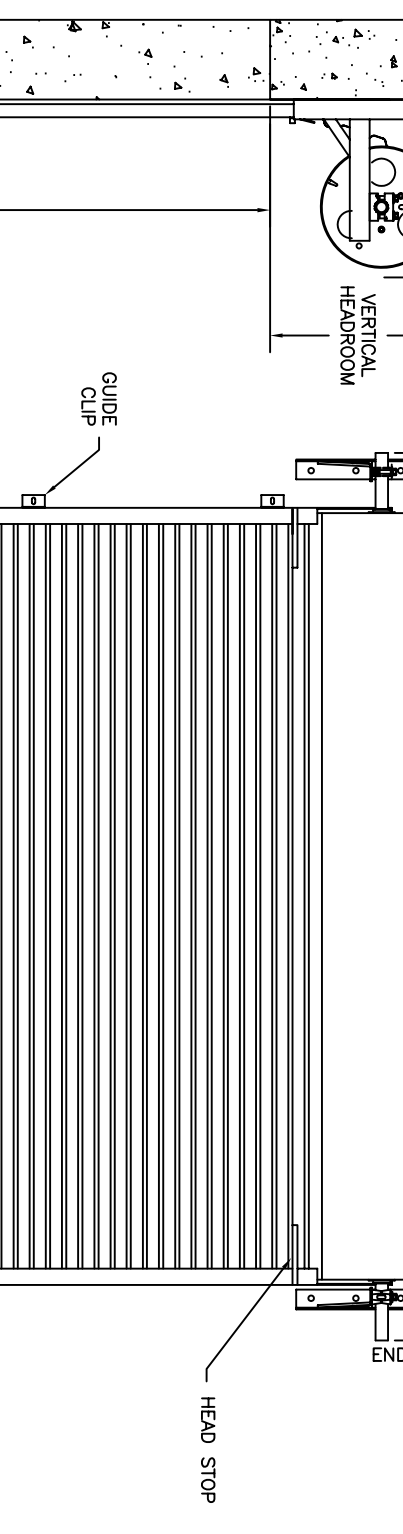
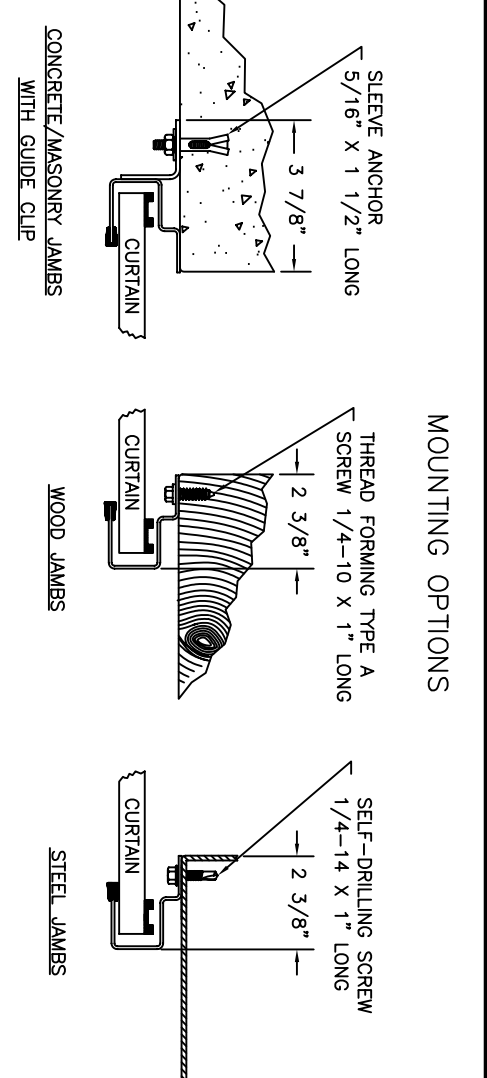


BRACKET ATTACHMENT  
 CONCRETE/MASONRY: SLEEVE ANCHOR, 3/8 X 1 7/8" LONG  
 WOOD: LAG SCREW, 3/8-7 X 3" LONG  
 STEEL: HEX BOLT, GR.5, 3/8-24 X 1 1/4" LONG

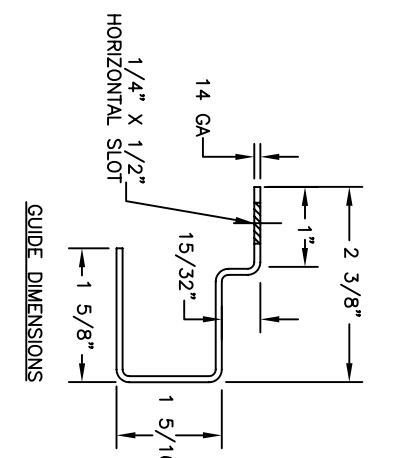
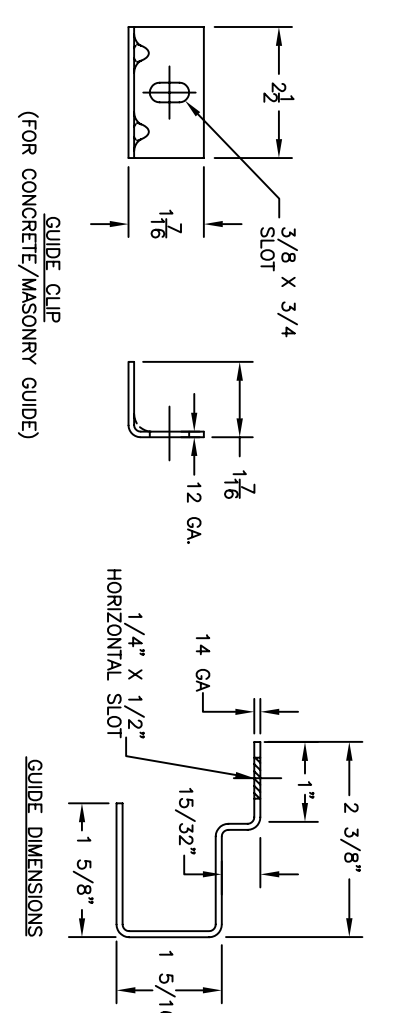
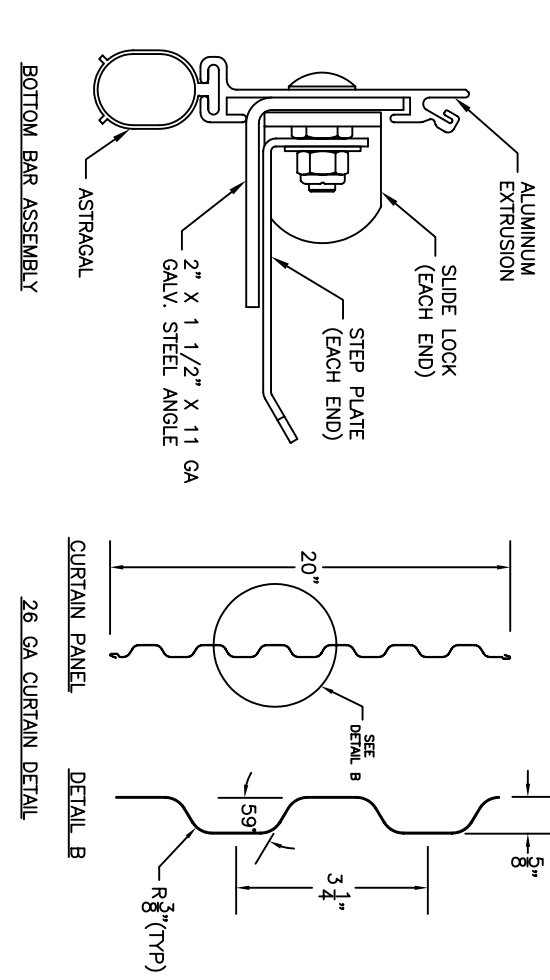
(\*) FOR PUSH-UP OPERATION 5"  
 FOR CHAIN OR ELECTRIC OPERATION 8 1/2"  
 NOTE: LEFT SIDE DRIVE SHOWN



5 1/2"



OPENING HEIGHT	VERTICAL HEADROOM	HORIZONTAL HEADROOM
THRU 8'-0"	17"	19"
OVER 8'-0" THRU 10'-0"	19"	21"
OVER 10'-0" THRU 14'-0"	20"	22"
OVER 14'-0" THRU 16'-0"	21"	23"
OVER 16'-0" THRU 18'-0"	22"	24"



- NOTES:
- 1) OPERATION TYPE MAY BE PUSH-UP, HAND CHAIN OR ELECTRIC.
  - 2) DOORS SHALL BE PROVIDED WITH SLIDE LOCKS AT EACH END OF BOTTOM BAR, ENGAGING GUIDES IN THE LOCKED POSITION.
  - 3) SERIES 2250 IS AN INSULATED SERIES 2000.

FACTORY ORDER NUMBER	DOOR SERIES	QTY	OPENING SIZE		JAMB TYPE			OPERATION				WEATHERSTRIP		ADDED OPTIONS			
			WIDTH	HEIGHT	CONCRETE/MASONRY	WOOD	STEEL	CURTAIN COLOR	PUSH UP	DIRECT CHAIN	REDUCED CHAIN	ELECTRIC	OPERATION HAND		TOP HEADER	SIDE	
2000	2250																

**COMMERCIAL DOOR SERIES 2000/2250**

CUSTOMER NUMBER: \_\_\_\_\_ DATE: \_\_\_\_\_

CUSTOMER NAME: \_\_\_\_\_ CONTACT: \_\_\_\_\_

PROJECT NAME: \_\_\_\_\_

PROJECT LOCATION: \_\_\_\_\_

PLANT: \_\_\_\_\_ SALES PERSON: \_\_\_\_\_

DRAWN BY: \_\_\_\_\_ DATE: \_\_\_\_\_

DRAWING NUMBER: \_\_\_\_\_ SHEET \_\_\_\_\_ OF \_\_\_\_\_

DOORS & BUILDING COMPONENTS  
 DOUNGLASVILLE, GA CHANDLER, AZ HOUSTON, TX  
 ©1999 DBCI ALL RIGHTS RESERVED